



**AIA Westchester
Hudson Valley**

Valerie Brown, Executive Director
914.232.7240
vbrown@aiawhv.org

FOR IMMEDIATE REALEASE: 10/21/19

**AIA Westchester + Hudson Valley celebrates the
2019 Design Awards winners**

The American Institute of Architects (AIA) Westchester + Hudson Valley Chapter named 14 recipients to its annual awards, Awards were selected by a diverse jury on design excellence and impact to the profession of architecture.

Special mention: Excellence in Historic Restoration

SUNY Purchase Dining Hall – Physical Education Building Preservation, Purchase, NY
Architect: KG&D Architects, PC, Mount Kisco, NY

The Dining Hall and Physical Education Building at Purchase College, both 1970s modernist structures original to the campus, required extensive maintenance and façade repairs in order to restore the buildings to their original grandeur. The core goal of this project was to rehabilitate the exteriors of these buildings. The design team was committed to taking a comprehensive approach that was consistent with the original design intent while being energy efficient and ultimately supporting the function of these critical campus facilities.

The jury saw the project as an intentional and nuanced renovation on a difficult brutalist structure.



Photo credit: David Lamb Photography

Special mention: Excellence in Community Master Planning
Marlboro CSD Vision 2020 Capital Project, Milton, NY

Architect: CSArch, Newburgh, NY

Marlboro Central School District's capital project will optimize educational space, address key infrastructure deficiencies, and improve health/safety issues. At the high school, improvements include renovations to the nursing suite, cafeteria, student support services, art studios, music, and athletics. Middle school renovations include an innovation lab and technology classroom, a new studio art room and adjacent graphic arts lab, nursing suite, cafeteria, and a new orchestra/music addition. All lobbies will receive new secure vestibules, greeting stations, and main office updates.

The Jury liked the transformative impact of this project, creating more welcoming, light-filled and modern learning and community spaces while also addressing security concerns in a way that's not obtrusive.



Photo credit: CSArch

Special mention: Excellence in Interior Design

Pond Lily, Gallatin, NY

Architect: Carol Kurth Architecture, PC, Bedford, NY

Pond Lily is a striking modern lodge strategically sited on private lakefront property in upstate New York. The house is revealed as the scenic approach passes beneath magnificent willow trees alongside the spectacular lake. The forms of the exterior integrate design elements indigenous to the pastoral countryside such as stone and wood, as well as expanses of windows to capture views of the magnificent property, while the minimalist interiors create a quiet retreat and gallery- like space.



Photo credit: Peter Krupenye

The jury loved the interior modern rustic aesthetic and skillful use of materials, details, lighting, and lines.

Citation Award

Dune Modular, Westhampton Dunes, NY

Architect: Taylor Viazzo Architects, PLLC, New Rochelle, NY

Dune Modular is a 3 story, beachfront home composed of factory-built modules set atop a steel platform. The platform elevates the home above potential flood waters. It is hurricane resistant, flood proof, energy efficient and handicap accessible. Front and back facades are braced with steel frames and infilled with windows providing expansive views of the seascape. An elevated deck with a pool; balconies and a roof terrace provide outdoor recreation spaces with unique vistas from a variety of elevations.

The jury thought the project was a fresh, beautiful and harmonious design. The design embraces the constraints of building in the coastal flood zone and expresses the flexibility and opportunities that can be achieved with modular construction and stunning interior details.



Photo credit: Jason Taylor, AIA

Golf Learning Center – Driving Range, New Haven, CT

Architect: KG&D Architects, PC, Mount Kisco, NY

The design team collaborated with a higher education institution to develop a new Golf Learning Center and Driving Range that matched and supported their prestigious athletic programming. The design process explored several options with the final solution being a single-story facility with indoor/outdoor practice areas overlooking a new driving range. The facility includes Women's and Men's Golf Team Suites, a flexible Training Pavilion and outdoor gathering and viewing terraces.

The jury thought the design expressed visual clarity inside and outside with harmony in material palette, forms, and scale. They were impressed with the design discipline, rigor and thoughtfulness.

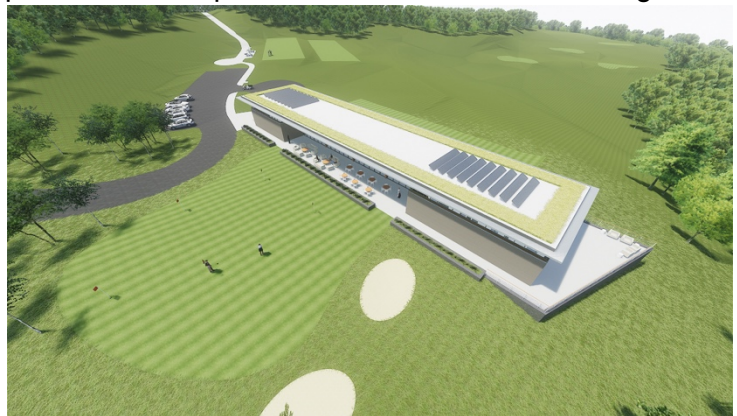


Photo credit: KG&D Architects, PC

Cropsey Barn Restoration, New City, NY

Architect: Lothrop Associates LLP Architects, White Plains, NY

The firm was commissioned to design the restoration and rehabilitation of the 1796 Barn complex and separate Bunkhouse which includes complete restoration of the entire

heavy timber frame, siding, wood trim, roof, barn doors, and barn sash windows. The Farm Alliance will be able to process, store and distribute crop shares to a minimum of 280 shareholders - nearly doubling their current 150 shareholder distribution.

The Barn Complex and Bunk House are situated on a 24 acre parcel of land that also includes the 1796 Dutch Colonial Farmhouse, still occupied by Jim Cropsey heir to the original owner. The Barn complex, Bunkhouse and farmlands are operated by the Rockland Farm Alliance under Ownership of Rockland County. Active farming and produce shares make the property a viable operation for the County and the Farm Alliance.



Photo credit: Lothrop Associates LLP Architects

The Jury thought the project was a positive, impactful restoration project for farming alliance and the community. Appreciate the depth of research and exploration of materials, construction methods, framing methods to respect the vernacular architecture of the past and yet, design and integrate modern infrastructure in the Barn complex.

Towne Bus Corp, Mount Kisco, NY

Architect: Grandberg & Associates, Architects, Mount Kisco, NY

A new 4,500 SF School Bus Maintenance Facility replaced a pre-existing fuel oil company which did not conform to the fabric of the busy commercial street environs.

The challenge was to design an industrial building that both addressed the functional needs of repairing up to 30 school buses per day while providing an attractive, playful building that harmonized with the neighborhood.



Photo credit: Curtis Lew

The jury thought the project was playful, modest and functional. The site plan and street transformation are welcoming and have positive impact on the neighborhood.

Barcoe Residence, Dobbs Ferry, NY

Architect: Christina Griffin Architect, PC, Hastings-on-Hudson, NY

When the owners discovered an 1815 stone house in Dobbs Ferry, NY, it brought them back to their homeland in Ireland. Steeped in history, this house was altered and

expanded to create an informal and inviting family living space, while achieving the rigorous Passive House standard. The owner, who has a construction company in New York City, shared a common belief with the architect that good design and high energy performance is not mutually exclusive, and they set out to achieve an inspiring yet harmonious design befitting this historic home.

The jury thought the project was simple, elegant, understated and blends with the existing home while maintaining its own identity.



Photo credit: Josefa Mulaire

Honor Award

Scarsdale HS Learning Commons, Design Lab – Fitness Center, Scarsdale, NY

Architect: KG&D Architects, PC, Mount Kisco, NY

The overarching goal of the Scarsdale High School project was to maximize underutilized areas of the building in order to create dynamic learning environments and modern fitness facilities supportive of the High School's Next Generation student. The project developed a new flexible suite of spaces including a Learning Commons in the building's original gym, a Design Lab in the former Auto Shop and a Fitness Center in a grade level storage space with direct access to the playing fields.

The jury thought the project was an inspiring and creative adaptive reuse project. It builds community in a powerful way by providing new flexible and multi-function areas for learning and social interaction. It is positive with a forward thinking approach to designing spaces. The jury was particularly impressed with the learning stair and the design lab which reflect fun vibrant learning environments with great adaptability.



Photo credit: David Lamb Photography

Irvington Town Hall Theater Expansion, Irvington, NY
Architect: Ferguson Malone Architecture, Irvington, NY

The Irvington Town Hall Theater is in desperate need of an entrance. The existing theater, located within the historic village hall, was put back into service in the early 1980s after a period of disuse. A series of insensitive renovations have left the theater accessed by an egress stair. This proposed renovation and expansion is designed to give the theater a proper entry and other urgently needed improvements while being sensitive to the historic building that houses it.



Photo credit: Ferguson Malone Architects

The jury thought the project was welcoming with the new glass entrance and courtyard creating an engaging community space with strong indoor-outdoor connections. The design allows the old and new to thrive together. The new plan seamlessly solves many circulation and accessibility issues.

New Paltz Downtown Park, New Paltz, NY
Architect: Allen Ross Architecture, LLC, New Paltz, NY

The reconfiguration of a municipal parking lot in downtown New Paltz allows for the creation of a new public park without the loss of parking spaces. The park is simultaneously a place for pedestrians to relax and meet, and a screen between Main Street and the municipal lot. It was envisioned to inspire a cultural shift towards a more pedestrian-friendly lifestyle and to strengthen community connections in the heart of the town.

The Jury found this project to be a nice embodiment of doing more with less; and a commendable effort to improve an otherwise nondescript urban location into a community amenity.



Photo credit: Allen Ross Architecture

High Honor Award

Edward B. Dunn Performing Arts Center, Rye, NY **Peter Gisolfi Associates, Hastings-on-Hudson, NY**

The Edward B. Dunn Performing Arts Center opened in the fall of 2018. The original 400- seat theatre was transformed and expanded into a performing arts auditorium with excellent sightlines and acoustics. The transformed theatre creates a cohesive building on the Rye Country Day School campus. The spaces in the center include:

- A professional theater seating an audience of 450
- A dance studio
- Choir and band practice rooms



Photo credit: Robert Mintzes



Photo credit: Robert Mintzes

The jury thought the project was cohesive with a clear design direction. They appreciated the simplicity of the design which elevates the importance of the theater function.

Highway House, Location Withheld

Architect: Taylor Viazzo Architects, PLLC, New Rochelle, NY

Highway House is a courtyard shaped residence adjacent to three roads: a highway, a main road and a residential lane.

Its three stretched out volumes provide visual and acoustic privacy. The home's heavily insulated walls and windows keep the interior quiet and create a comfortable, energy efficient envelope. Five bedrooms, six and a half bathrooms, a pool, a pool house and generous indoor and outdoor kitchens make



Photo credit: Steve Frejhan



Photo credit: Steve Frejhon

Highway House a surprisingly peaceful venue for living and entertaining beside bustling roadways.

The jury thought the project was excellent with thoughtful design, siting and research. The design embraces the positive and negative constraints of the site including sound, traffic, and views. It is a clear disciplined parti and design harmony followed through beautifully with selection of materials, forms and well-crafted details.

June 5th Memorial Park, Philadelphia, PA
Architect: Scott Aker, AIA

On June 5th, 2013, a reckless demolition at 2138 Market Street in Philadelphia collapsed a party wall killing six innocent people, injuring many others. The June 5th memorial arises out of the (20'x 125') building footprint where a Salvation Army thrift store once stood. The narrow of the memorial appears large and welcoming through oblique geometries, chamfered edges, and landscaping. The memorial



Jeffrey Totaro Architectural Photography



Jeffrey Totaro Architectural Photography

remembers the victims with light, color, and transparency; while celebrating the new demolition safety regulations adopted by the City.

The jury thought the project was evocative, memorable, suggestive, contemplative yet inviting, accessible and human-scaled. It's everything a memorial should be, yet not grandiose or forbidding.

Award recipients were honored at the AIA Westchester + Hudson Valley Celebration of Architecture Night Awards at Le Chateau, South Salem, NY on October 16, 2019.

About AIA Westchester + Hudson Valley: Chartered by the American Institute of Architects in 1936, AIA Westchester + Hudson Valley represents over 700 local members. The chapter works to achieve a more humane built environment and a higher standard of professionalism for architects throughout Westchester County and the Hudson Valley region of New York State. The chapter region covers Westchester, Rockland, Putnam, Dutchess, Orange, Ulster, and Sullivan Counties.

###